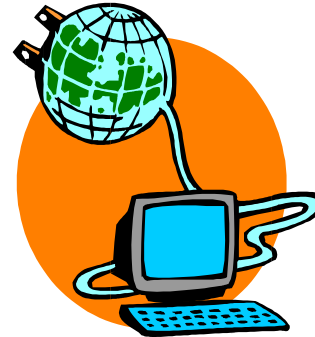


LifeHub™ is an internet-based organizational effectiveness program focusing on the work/life issues that face all companies. LifeHub™ confronts the critical business issues challenging every organization: turnover, productivity, absenteeism, and healthcare costs. LifeHub™ addresses the corporate need through a program that is targeted at both the professional and personal needs of employees and their families. It provides dynamic and proactive support enabling the employee and their families to seek expert guidance, support and development, both personally and professionally.



#### What does LifeHub™ support?

- ◆ Career Skills
- ◆ Stress
- ◆ Emotional Health
- ◆ Parenting
- ◆ Personal Finance
- ◆ Relationships
- ◆ Fitness
- ◆ And Much More

#### How does LifeHub™ support?

- ◆ Diagnostic Assessments
- ◆ Articles
- ◆ Ask the Expert
- ◆ Chat Rooms
- ◆ Worksheets & Tools
- ◆ Learning Experiences
- ◆ On-line Seminars
- ◆ News
- ◆ Quick Tips

#### Benefits of LifeHub™ to the Employee

- ◆ Additional Company benefit that includes family.
- ◆ Easy access to professional advice from the home or office.
- ◆ Expert advice and assistance available 24 hours a day, conveniently and confidentially.
- ◆ Self development opportunities .
- ◆ Increased work/life balance.
- ◆ Increased company communication.
- ◆ New benefit for employee that goes beyond traditional work/life programs .
- ◆ Access to quality filtered information.

#### Benefits of LifeHub™ to the Organization

- ◆ Reduced employee turnover and absenteeism.
- ◆ Reduced Health Care Costs.
- ◆ Providing employees tools for developing job-related skills.
- ◆ Increasing employee productivity as employees have the tools required, limiting personal matters from negatively affecting performance at work.
- ◆ “Touching” more employees in early interventions, thereby, improving productivity.
- ◆ Increased employee satisfaction.
- ◆ Providing tools and statistics to gauge overall employee attitudes concerning work/life issues.
- ◆ Provides a single site for a company to manage and communicate with employees about all HR systems.
- ◆ Increasing employee education concerning the company benefits, resulting in increased usage

and an increase in the return on investment.

AlignMark's LifeHub™ solution is an internet-based employee enhancement tool focusing on work/life issues facing all employees and organizations. Addressing both the professional and personal needs of employees and their families, LifeHub™ provides dynamic and proactive support services to compliment companies existing programs to enhance employees' work/life skills and abilities.

Once a company goes through a very simple implementation process, employees have instant access to all of LifeHub's services; assessments, experts, learning experiences, articles, chat rooms, and much more.

Additionally, the company gains a website for communicating with their employees and to manage all HR programs provided by the organization.

## Why Work/Life Programs?

- ◆ Research shows stress is reason for 60 – 90% of medical problems .
- ◆ High-stressed workers are over 2 times more likely to be absent more than 5 times per year.
- ◆ Studies show absenteeism cost companies an average of \$600+ per employee.
- ◆ By reducing absenteeism for 5% of employees can provide a 200%+ ROI on LifeHub.
- ◆ By reducing turnover by less than 5 employees can provide a 200% ROI on LifeHub.
- ◆ Employees rate work/life balance as major priority.
- ◆ Stress claimants receive compensation benefits 9 out of 10 times.
- ◆ Depression cost U.S. businesses over \$70 billion annually.

---

## Who is AlignMark?

AlignMark has been a premier supplier of integrated human resource solutions to the nation's largest organizations, including United Parcel Service, First Union, American Express, Ford Motor Credit, General Motors and American Automobile Association.

AlignMark offers a seamless approach to addressing the professional and personal needs of employees and the HR needs of an organization ranging from recruitment and selection to performance management.

---



Authorized distributor of LifeHub™

10592 Perry Hwy., Suite 201  
Wexford, PA 15090

For additional information:

Tel: 724.934.9349  
Fax: 724.934.9348

[www.allearnatives.com](http://www.allearnatives.com)